

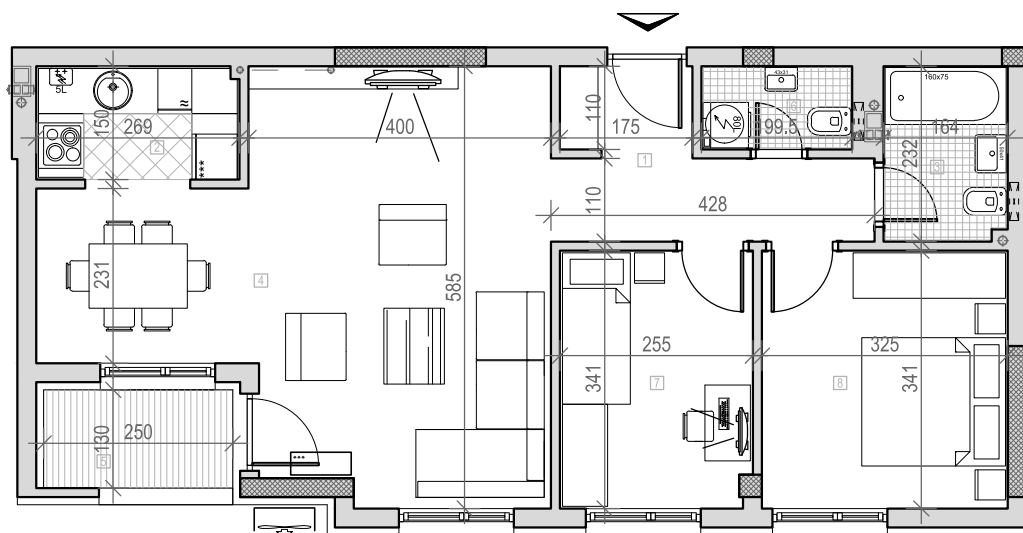
osnova stana br. 10
 I sprat

STAMBENA ZGRADA

Po+P+2+Pk

Novi Sad, Ul. Bele njive 39 i 41

K.P. 8497 i 8498, K.O. Novi Sad I

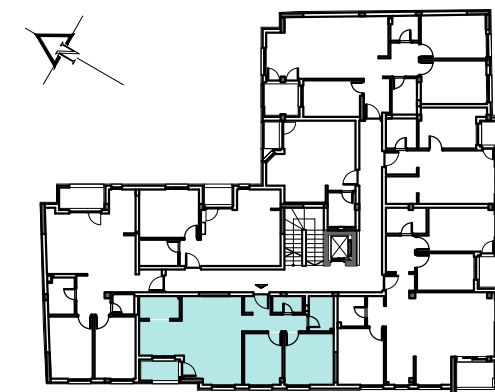


I SPRAT		
STAN BR. 10		
br.	prostorija	površina/m ²
1	ULAZ	6,74
2	KUHINJA	4,03
3	KUPATILO	3,80
4	DN. SOBA	29,12
5	LOĐA	3,25
6	WC	2,19
7	SP. SOBA	8,61
8	SP. SOBA	11,08
UKUPNO		68.85m²



LEGENDA SIMBOLA:

	VENTILATOR
	KANALIZACIONA VERTIKALA
	VENTILACIONI KANAL
	RADIATOR/SUŠAČ (KUPATILO)
	UNUTRAŠNJA JEDINICA KLIME
	SPOLJNA JEDINICA KLIME



ulica darda rajkovic

