

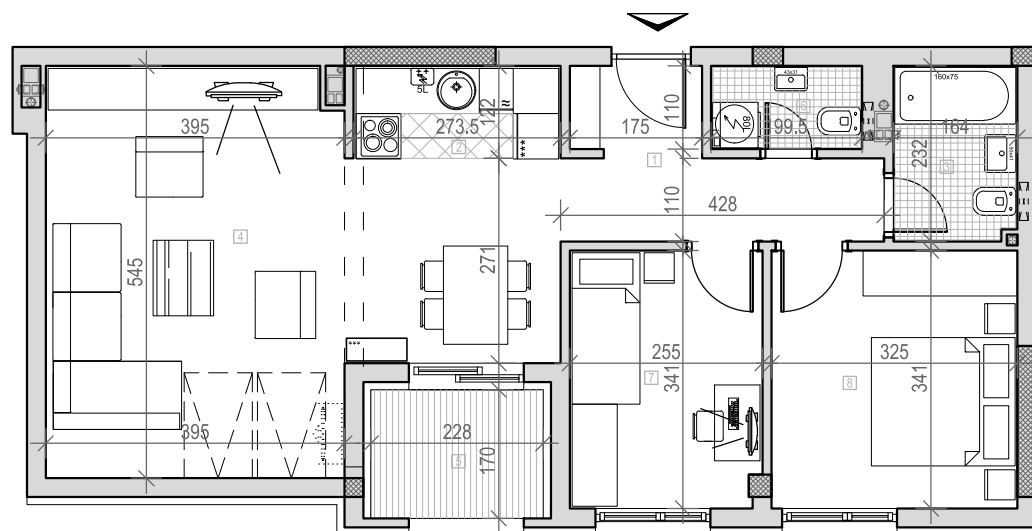
osnova stana br. 24
 potkrovlje

STAMBENA ZGRADA

Po+P+2+Pk

Novi Sad, Ul. Bele njive 39 i 41

K.P. 8497 i 8498, K.O. Novi Sad I



POTKROVLJE STAN BR. 24		
br.	prostorija	površina/m ²
1	ULAZ	6,76
2	KUHINJA	3,26
3	KUPATILO	3,80
4	DN. SOBA	23,69
5	LOBA	3,88
6	WC	2,28
7	SP. SOBA	8,62
8	SP. SOBA	11,08
UKUPNO		63.37m²

